



RIVERSIDE TOUR OVERVIEW

October 15-17, 2021



Thank you for registering for the **Riverside Tour** hosted by the **Long Beach Model T Club**. This **Laughlin, NV** based tour travels along the **Colorado River Valley** to the **Topock 66 Resort** and through an original 1926 section of the **Mother Road, Route 66** to the gold rush town of **Oatman, AZ**. On Sunday our club geologist **Gary Guacci** is returning from the Mid-west and will be presenting an in the field informative geology talk. Make a point to visit the two automotive museums at the **Riverside Resort**. The following information may be useful in your tour planning.

Location and General Directions (Maps on Reverse)

Laughlin, NV is located 30 miles north of Needles, CA. Take **Interstate 40** east from **Barstow, CA** approximately 130 miles. Take **Exit 133, US 95** north towards Searchlight-Las Vegas for about 20 miles. Turn right on **Highway 163** down a steep 19-mile hill to the town of Laughlin. An alternate more level route is 8 miles further east on **Interstate 40** by taking **Exit 139, River Road Cutoff**. Turn left onto the **Needles Highway** continuing 20 miles into Laughlin.

Hotel

The official tour hotel is **Don Laughlin's Riverside Resort**. Booking code: **C/LBMTC** (guaranteed until Sept. 13th) 1650 S. Casino Drive, Laughlin, NV 89029. Phone: 800-227-3849. www.riversideresort.com

Vintage Car and Trailer Parking (Parking Maps on Reverse)

There will be a designated area to park our vintage vehicles in the hotel parking lot. Security will monitor by cameras and patrols. Trailers can optionally be parked behind the **Riverside RV Resort** across Casino Drive from the main hotel.

Friday Tour Overview (12 tour miles)

Sunrise: 6:44 AM, Sunset: 6:02 PM

At **1:00 PM** today we meet at our designated car parking area and tour locally to visit **Community Park** in Bullhead City, AZ. We will be displaying our cars with a local Bullhead City car club on the river bank. The **Colorado River Museum** will be open for us to visit. Departing by **4:30 PM**, join us at **5:00 PM** for the **Welcome Reception** in the **Bridgeview Room** located at the Riverside Resort.

Saturday Tour Overview (95 tour miles)

Sunrise: 6:45 AM, Sunset: 6:01 PM

We depart at **9:30 AM** and tour south crossing the Colorado River to Arizona Hwy. 95 and travel 40 miles south to the **Topock 66 Resort** for lunch. The resort has a swimming pool for those whom wish to cool down a bit. After fueling up in the town of **Topock**, we continue north on the original **Route 66** for 25 miles to visit the Model T chomping wild burros and gold in **Oatman, AZ**. We travel 28 miles back to the **Riverside Resort** for our 5:00 PM reception and 6:00 PM **Model T Banquet**. We step aboard the **USS Riverside** at **8:30 PM** for a narrated one-hour cruise on the mighty Colorado.

Sunday Tour Overview (about 15 tour miles)

Sunrise: 6:46 AM, Sunset: 6:00 PM

Our club geologist **Gary Guacci** will be presenting an in the field informative geology talk. We return to the hotel for lunch and head on home that afternoon or Monday.

Time Zones: Arizona, California and Nevada have the same **Pacific Daylight Times** in October.

Looking forward to an adventurous tour. Welcome any questions, comments or suggestions.

John Bowman

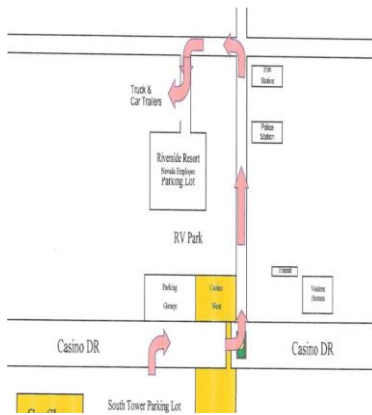
Tour Coordinator



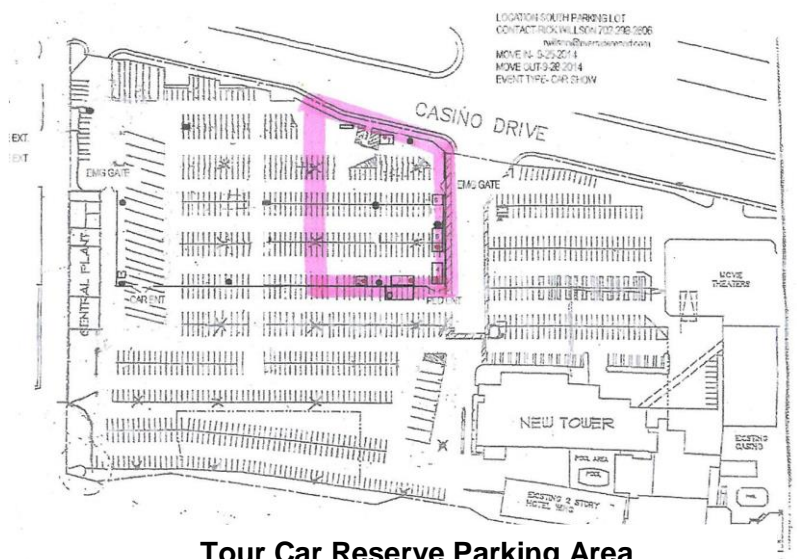
- General Laughlin Area Map
- Vintage Vehicle Parking Area
- Optional Trailer Parking Area



General Laughlin Area Map



Optional Trailer Parking Location at RV Park



Tour Car Reserve Parking Area Riverside Resort, Laughlin NV.